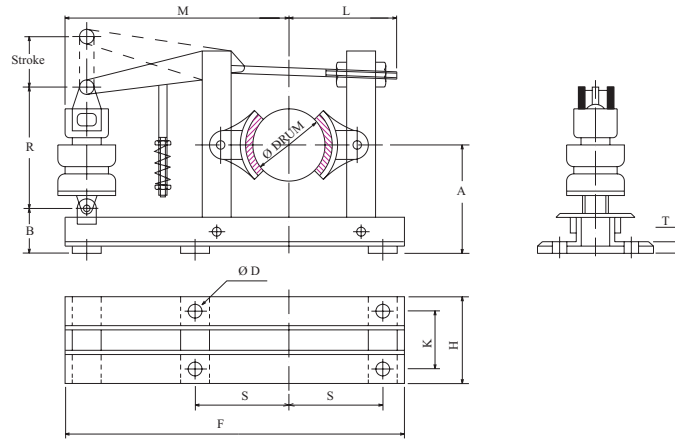


EH THRUSTOR BRAKE



Model	Drum Ø	Torque Kgm.	Thrustor Size	Stroke	Shoe Width In mm.	Angle of Shoe Min.	A	Fixing Dimensions			F	H	R	B	T	L	M
								S	K	D							
100S	100	3	8	30	58	70	90	115	60	14	405	90	284	22	6	120	360
150S	150	6	8	30	70	70	140	155	50	14	490	80	284	29	10	155	415
100	100	4	18	50	58	70	120	115	60	14	450	90	362	32	12	135	350
150	150	8	18	50	70	70	150	155	50	14	490	80	362	77	12	170	390
200	200	14	18	50	90	70	170	185	60	14	570	120	362	78	12	205	425
		25	34										433				
250	250	20	18	50	110	70	200	220	70	14	765	130	362	45	18	280	530
		30	34										433				
300	300	30	18	50	140	70	240	265	80	18	790	130	362	44	18	300	550
		50	45										75				
400	400	100	45	50	180	70	320	320	100	18	850	200	433	140	18	250	620
		125	75										509				
		200	115	75													

Note - 1) Torque rating is standard.
 2) Higher torque is obtained depending on lever ratio, duty cycles, thrustor size etc.
 3) Drum dia. are shown in mm. if inches size is required on request.
 4) Model 100S & 150S are recommended for light duty.
 5) Higher Models & Torque are also available on request.

Drg. No. - THB / STD. / 2007 / 1001



PETHE BRAKE MOTORS PVT. LTD. GUHAGAR- 415 703.